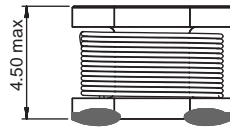
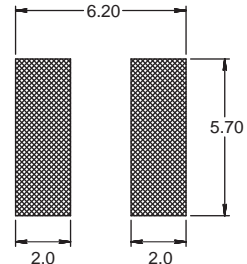
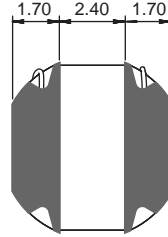
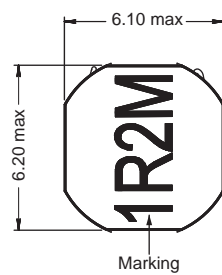
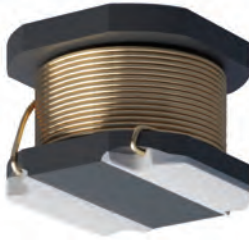


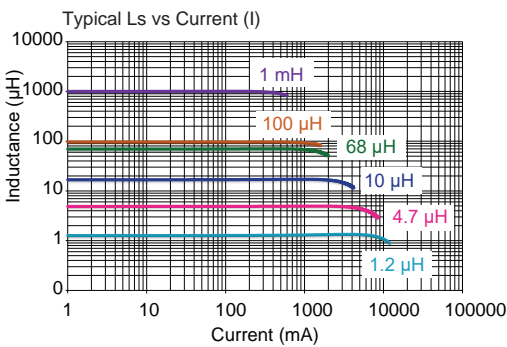
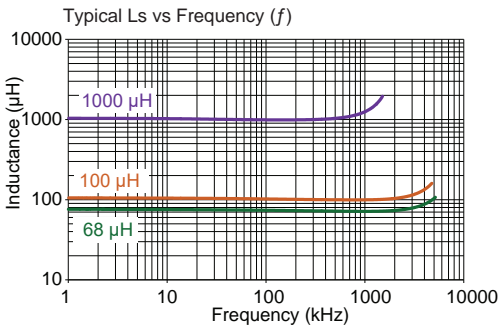
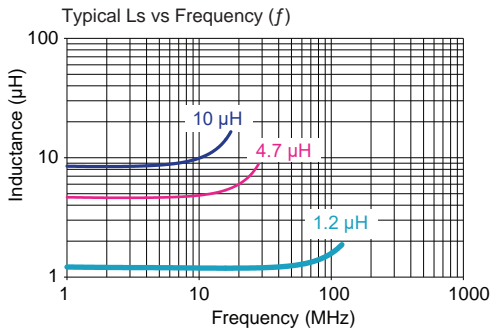
# 242418 FP

Non-shielded



Recommended layout for solder pads

Chip Inductors for Power Applications



Part No	Inductance	f <sub>L</sub>	Tol	SRF typ (MHz)	DCR max (mΩ)	Rated DC Current	
	L (µH)					± (%)	I <sub>sat</sub> (A)
242418FP-R82M-01	0.82	1 MHz @ 1 V	20	145	16	8.00	5.00
242418FP-1R2M-01	1.2	1 MHz @ 1 V	20	145	18	8.00	5.00
242418FP-1R5M-01	1.5	1 MHz @ 1 V	20	92	25	6.50	4.50
242418FP-2R2M-01	2.2	1 MHz @ 1 V	20	65	25	6.00	4.00
242418FP-2R7M-01	2.7	1 MHz @ 1 V	20	50	35	5.25	4.00
242418FP-3R3M-01	3.3	1 MHz @ 1 V	20	45	45	4.50	4.00
242418FP-3R9M-01	3.9	1 MHz @ 1 V	20	40	45	4.00	4.00
242418FP-4R7M-01	4.7	1 MHz @ 1 V	20	39	55	3.90	3.40
242418FP-5R6M-01	5.6	1 MHz @ 1 V	20	30	55	3.50	3.30
242418FP-6R8M-01	6.8	1 MHz @ 1 V	20	30	75	3.20	3.00
242418FP-8R2M-01	8.2	1 MHz @ 1 V	20	25	80	3.00	2.80
242418FP-100M-01	10	1 MHz @ 1 V	20	20	90	2.80	2.20
242418FP-120M-01	12	1 MHz @ 1 V	20	20	110	2.45	2.00
242418FP-150M-01	15	1 MHz @ 1 V	20	15	125	2.16	2.00
242418FP-180M-01	18	1 MHz @ 1 V	20	12	135	2.10	1.90
242418FP-220M-01	22	1 MHz @ 1 V	20	12	170	1.75	1.60
242418FP-270M-01	27	1 MHz @ 1 V	20	10	195	1.65	1.60
242418FP-330M-01	33	1 MHz @ 1 V	20	10	235	1.56	1.45
242418FP-390M-01	39	1 MHz @ 1 V	20	10	320	1.40	1.30
242418FP-470M-01	47	1 MHz @ 1 V	20	9.0	355	1.40	1.20
242418FP-560M-01	56	1 MHz @ 1 V	20	7.8	420	1.20	1.10
242418FP-680M-01	68	1 MHz @ 1 V	20	7.0	460	1.10	0.95
242418FP-820M-01	82	1 MHz @ 1 V	20	6.5	520	1.00	0.90
242418FP-101X-01	100	1 MHz @ 1 V	10,20	5.0	620	0.90	0.80
242418FP-121X-01	120	1 MHz @ 1 V	10,20	5.0	750	0.85	0.75
242418FP-151X-01	150	1 MHz @ 1 V	10,20	5.0	940	0.72	0.66
242418FP-181X-01	180	1 MHz @ 1 V	10,20	4.0	1200	0.70	0.58
242418FP-221X-01	220	1 MHz @ 1 V	10,20	3.9	1260	0.64	0.56
242418FP-102X-01	1000	1 kHz @ 1 V	10,20	1.7	5200	0.25	0.25

Core Material: Ferrite

Revision date: 08 Jun 2023

SPQ: Taped / Reel 1000 [-01]

Remarks: Unlisted inductance values available upon request.